



FUTURE LEAP

CLIFTON

Carbon Neutral Co-working and
Office Space

The Old Chapel, 16 Oakfield Rd,
Clifton, Bristol BS8 2AP

hub@futureleap.co.uk
01179458730

Who are Future Leap?

The organisation behind the Future Leap Network. Helping businesses become more sustainable.

Our collective mission is to give organisations the space, knowledge, contacts and tools to accelerate their sustainability journey and progress towards carbon neutrality. Through showcasing the most innovative solutions, facilitating the most future thinking discussions and collaborating with the most sustainable experts in businesses.

- **Events**
- **Co-Working**
- **Sustainability Consultancy**
- **A Sustainable Business Network**



Future Leap Clifton Perks

Co-workers gain automatic membership to the Future Leap Network and access to FREE events

- Free tea & coffee
- Kitchen area
- Superfast broadband
- Telephone booth
- Break-out space
- Bookable event space
- Bookable meeting rooms
- Social activities
- Virtual office at Gloucester Road address (package dependant)
- Sustainable Business Networking
- 12+ hour access
- Regular Future Leap events
- Bike storage * *coming soon* *
- Shower facilities
- Outdoor garden space * *coming soon* *

Please note that the Clifton co-working and office spaces are not wheelchair accessible: access is via stairs



Shower facilities



Outdoor Garden



Break-out space



Socials & Wellbeing



Bike Storage



Virtual office



Free Tea & Coffee



Super Fast Broadband



Future Leap Clifton Co-Workers

Co-workers gain automatic membership to the Future Leap Network and access to FREE events

Future Leap Clifton shares the building and works closely with Six Agency who are brand strategy experts.

This Future Leap location is attracting a community of members who work in the environmental sector, software development and creative or design industries, but all are welcome.

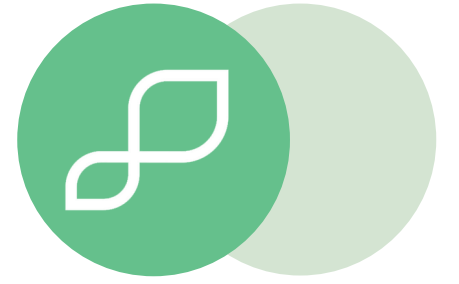
Members such as **Future Leap Finance, SustainIt, Susy Research, UK Digital Marketing, Halycan Water and Greener Energy Futures** to name just a few.

With a Media Studio basement in development, our Clifton community will soon be expanding to accommodate more of the creative industries.





Desk Packages



Seed | 30 hours per month flexible hot desking
£80 + VAT per month

Sapling | 60 hours per month flexible hot desking
£150 + VAT per month

Tree | unlimited hot desking
£225 + VAT per month

Permanent Desk | Your own dedicated workspace
£300 + VAT per desk per month
includes 4 hours meeting room credit

These prices are suitable for multi-site use, speak to the team about accessing Future Leap Clifton and Future Leap Gloucester Road

Day Rate: £25 + VAT | **Hourly Rate:** £4 + VAT



The Glass Arch Room

Future Leap Clifton

Currently available to hire as a meeting room

Available to hire as a private office

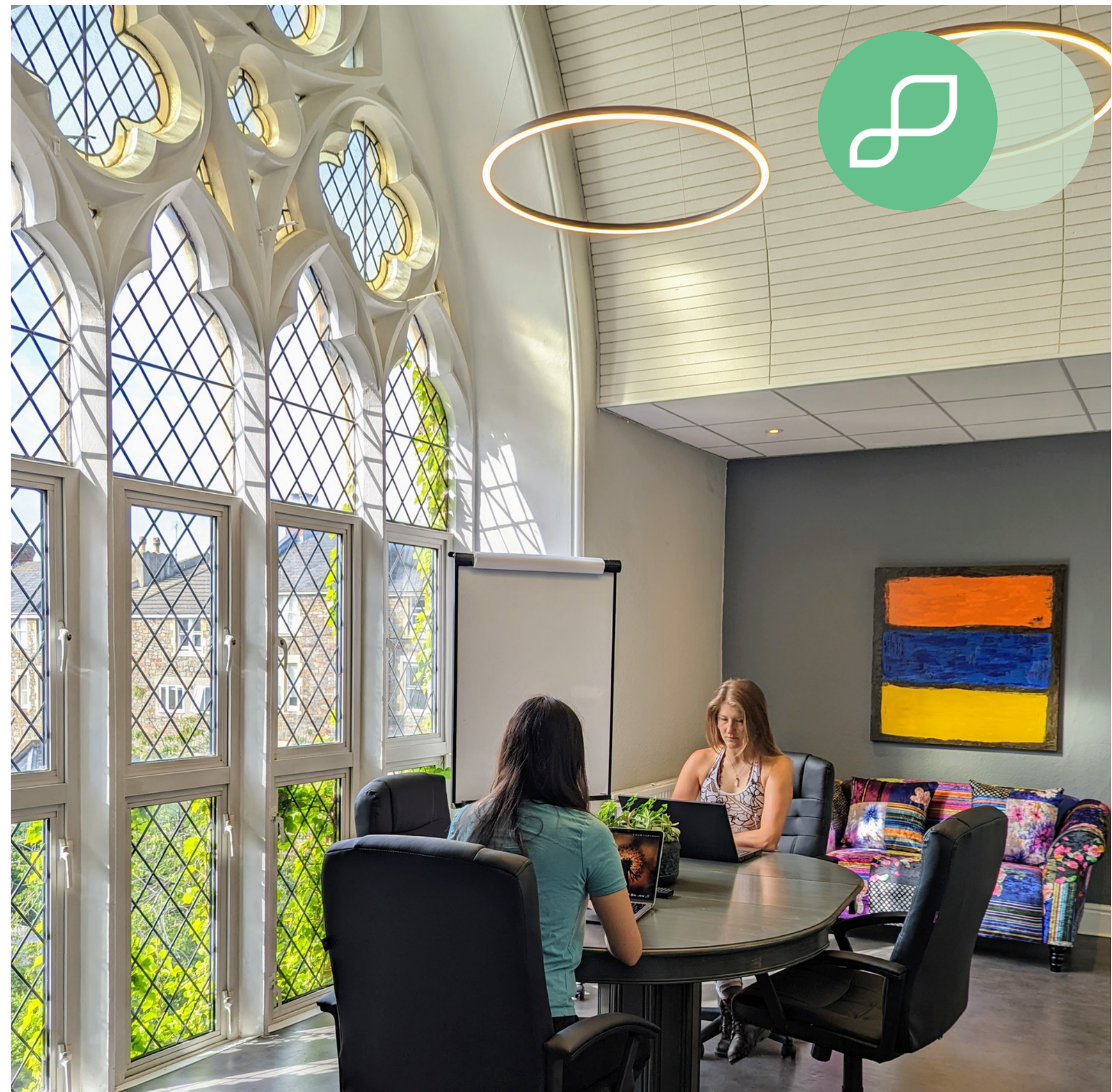
- £1500+VAT per month
- Suitable for 4 - 6 people
- Lots of natural light
- Comfortable seating
- Spacious

Contact

Clifton@futureleap.co.uk
01172442455 - Clifton
0117 945 8730 - Main office

Website

www.futureleap.co.uk



Large Office Space Available

Suitable for 12 - 15 people

- £4,000 + VAT per month
- Lots of natural light
- Comfortable seating
- Spacious and versatile

Contact

Clifton@futureleap.co.uk

01172442455 - Clifton

0117 945 8730 - Main office

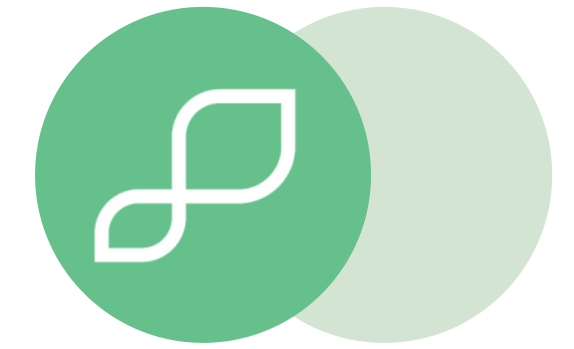
Website

www.futureleap.co.uk





Meeting Rooms



Board Room: up to 10 people

£30 per hour + VAT

Glass Arch Meeting Room: up to 6 people

£30 per hour + VAT

Clifton Event Space: up to 16 people board room layout with breakout space

£40 per hour + VAT

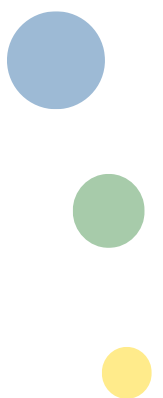
Clifton Event Space: up to 60 people theatre style

£40 per hour + VAT

Tea and Coffee available

20% discount on bookings for Future Leap members

Catering available but must be booked in advance. Contact us for a quote



Meeting Rooms at Future Leap Gloucester Road

Copper Meeting Room 2: up to 6 people

£20 per hour + VAT

Event space:

up to 14 people board room style: screen available

up to 30 people theatre layout day time bookings

£30 per hour + VAT 9am to 5pm

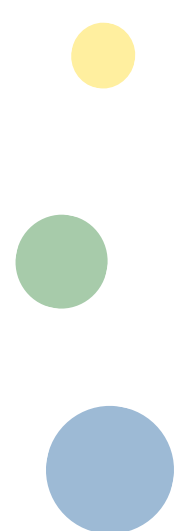
Evening Event Space

Up to 50 people seated or 100 - 200 people seated and standing with networking space

£40 per hour + VAT 5pm to 11pm

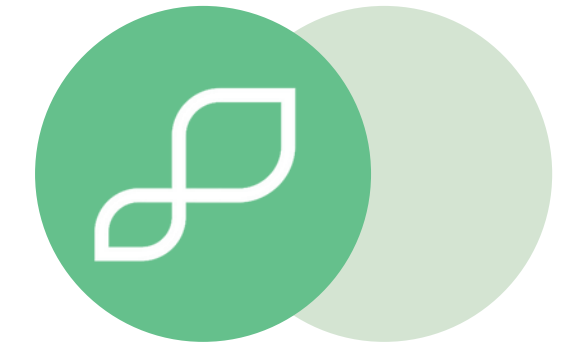
Tea, Coffee, Catering available plus onsite eco-cafe

20% discount on room bookings for Future Leap members





What people have to say about us



"I've never felt so connected to a community, all working towards a better future."

"It's such an inclusive space, everyone is welcome, no matter where they are on their sustainability journey."

"It is what we dream of - a space filled with people who are purposeful about sustainability driving change through their work. Corridor conversations help with sense of hope. And you don't even need to look out for green washing in this network."



Connect with us

CONTACT

hub@futureleap.co.uk
01172442455 - Clifton
0117 945 8730 - Main office

SOCIAL MEDIA

LinkedIn:

Future Leap Network / Future Leap Sustainable Business Hub

Facebook:

@FutureLeapHub / @FutureLeapNetwork

Instagram:

@future_leap_hub / @futureleapnetwork

Twitter:

@FutureLeapUK

WEBSITE

To learn more visit:
www.futureleap.co.uk

